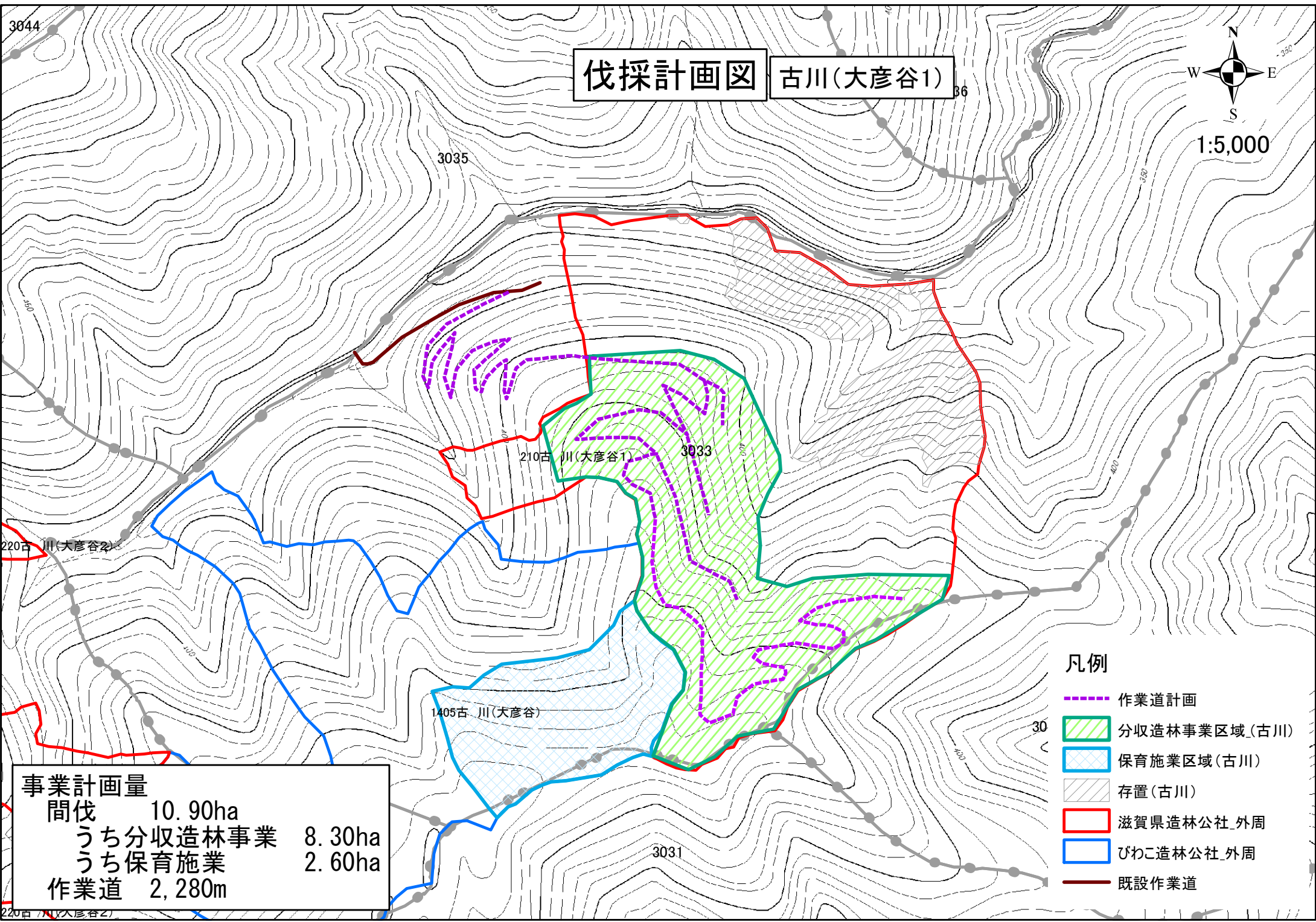





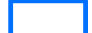



伐採計画図 古川(大彦谷1)



凡例

-  作業道計画
-  分収造林事業区域(古川)
-  保育施業区域(古川)
-  存置(古川)
-  滋賀県造林公社_外周
-  びわこ造林公社_外周
-  既設作業道

事業計画量

間伐	10.90ha	
うち分収造林事業	8.30ha	
うち保育施業	2.60ha	
作業道	2,280m	